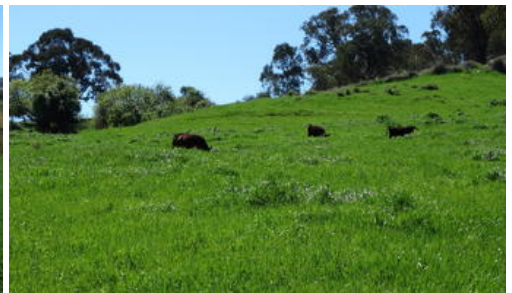




. Georges Creek Road, Georges Creek



"WILLIES" - ABSOLUTE FRONTAGE TO GEORGES CREEK

20.64 HECTARES - 51 ACRES

- Located 15.5km North East of Tallangatta and 57.5km East of Wodonga, this productive small holding has the permanent Georges Creek running through the property, along with a spring fed dam.
- Fenced into two paddocks, pastures consist of clover and rye grass. A hayshed/machinery shed with water storage of 23,500 litres allows regular supply to an established orchard of 36 trees.
- Towong Shire Rates: \$857.85 per annum.

Disclaimer: All care has been taken in compiling these particulars, but the vendor and their agents do not guarantee the details and cannot accept responsibility for errors or misdescriptions if any. Intending purchasers should satisfy themselves as to the correctness of details.

The above information provided has been furnished to us by the vendor/s. We have not verified whether or not that information is accurate and do not have any belief in one way or the other in its accuracy. We do not accept any responsibility to any person for its accuracy and do no more than pass it on. All interested parties should make and rely upon their own inquiries in order to determine whether or not this information is in fact accurate.

Price	SOLD
Property Type	Residential
Property ID	1443
Category	Rural
Land Area	51.00 ac

Agent Details

Stephen Paull - 0409 578 283
Stephen Paull - 0409 578 283

Office Details

Albury
593 Macauley Street Albury NSW
2640 Australia
02 6058 1234



Nutrien
Ag Solutions