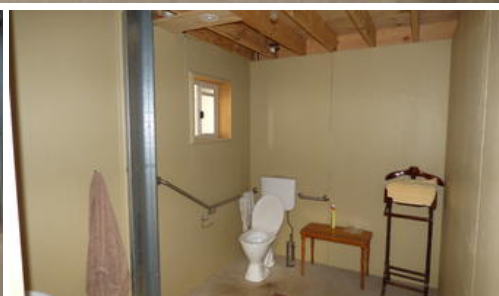


Sold



3 Mathews St, Myrtleford



Versatile Industrial Shed

An extremely versatile property of approximately 1,062 square metres with a 22 metre x 17 metre industrial shed which includes a 6 metre x 17 metre open bay area, lock up shed area of approximately 264 square metres with plenty of height, small store room, disable friendly toilet and kitchenette area, 2 roller doors and a large area of concrete parking area.

Tenders to close Friday 23rd November 2018 at 5.00pm,

at the office of Paull & Scollard Pty Ltd

74 Standish Street, Myrtleford. 3737

Disclaimer: All care has been taken in compiling these particulars, but the vendor and their agents do not guarantee the details and cannot accept any responsibility for errors or misdescriptions if any. Intending purchasers should satisfy themselves as to the correctness of details.

The above information provided has been furnished to us by the vendor/s. We have not verified whether or not that information is accurate and do not have any belief in one way or the other in its accuracy. We do not accept any responsibility to any person for its accuracy and do no more than pass it on. All interested parties should make and rely upon their own inquiries in order to determine whether or not this information is in fact accurate.

1 1 4

Price	SOLD
Property Type	Residential
Property ID	1623
Category	Other
Land Area	1,062 m2

Agent Details

Bernard Ivone - 0428 522 572

Office Details

Myrtleford
74 Standish Street Myrtleford VIC
3737 Australia
03 5752 2232

Paull & Scollard

Nutrien
Ag Solutions