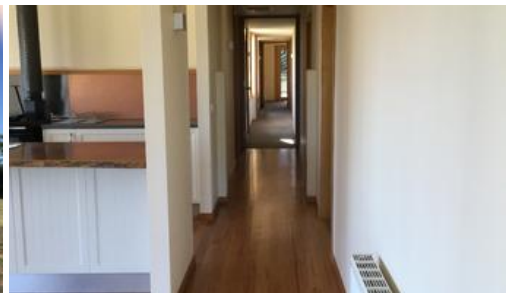




98 Switchback Rd, Mudgegonga



## Spectacular Property

Only 18km to Myrtleford, 26 km to Yackandandah and 53 km to Albury/Wodonga. A perfect Country escape this 3 bedroom house offers a possible 4th bedroom/library, 2 bathrooms, open plan living/dining , cathedral ceiling, separate Butlers Pantry kitchen with outdoor access & combined study/sewing room. Featuring wood fired hydronic heating throughout, open fireplace, double glazing, reverse cycle ducted A/C, 5kw grid connected solar power and polished timber flooring & in-ground swimming pool. Water security is an excellent feature- Permanent supply tank rainwater for the house.

The above information provided has been furnished to us by the vendor/s. We have not verified whether or not that information is accurate and do not have any belief in one way or the other in its accuracy. We do not accept any responsibility to any person for its accuracy and do no more than pass it on. All interested parties should make and rely upon their own inquiries in order to determine whether or not this information is in fact accurate.

3 2 1

<b>Price</b>	\$500 per week
<b>Property Type</b>	Rental
<b>Property ID</b>	1852
<b>Category</b>	House

### Agent Details

Julie Saric - 0428484866

### Office Details

Myrtleford  
74 Standish Street Myrtleford VIC  
3737 Australia  
03 5752 2232

