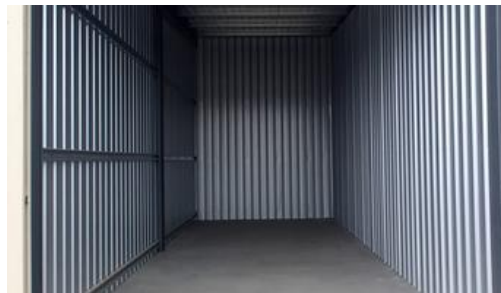




Shed 3, 12-14 Headerworld Avenue, Corowa



SHED 3 SECURE STORAGE AVAILABLE NOW

Secure storage for big boats, vans and vehicles and general trade. Shed size is 9m X 3.4m with 3.5m high sliding door. Ample room to reverse into the shed.

Long term tenure guaranteed. Room for the skis, boards etc. Key to the secure yard provided and lock up your own shed with your own lock and key. All weather access on hardstand and good drainage on surrounding hardstand.

The above information provided has been furnished to us by the vendor/s. We have not verified whether or not that information is accurate and do not have any belief in one way or the other in its accuracy. We do not accept any responsibility to any person for its accuracy and do no more than pass it on. All interested parties should make and rely upon their own inquiries in order to determine whether or not this information is in fact accurate.

Price	\$125.00 per month
Property Type	business
Property ID	910
Category	Services

Agent Details

Brian O'Shea - 0427 931 102

Office Details

Corowa
243 Honour Avenue Corowa NSW
2646 Australia
02 6033 3833

